

ILLINOIS CHAPTER OF THE  
**American Fisheries  
 Society**

Volume 23, Issue 1

January 2009



## President's Message

I hope all of you celebrated the holiday season with family and friends and have started the new year recharged! While I don't officially make resolutions as it seems to set me up for failure, I do try to review my current priorities at work and home and attempt adjustments throughout the year. One of the items that I've been contemplating with regard to AFS is how we as a Chapter develop fisheries professionals. Currently, we do this by exchanging information at our annual meeting and through the Chapter newsletter, as well as by offering continuing education courses. However, our ability to meet face- to- face has been limited by travel restrictions and budget cuts. I've been asking myself how we as a Chapter can sell or market the value of member attendance at these events. Tomorrow if you were in the elevator alone with the chief financial person in your institution, could you justify why you need to attend the annual meeting or next Continuing Education workshop? It's not something we often think about, but successful people are ready to state his/her case when the opportunity presents itself. In 30 seconds or less, you can pique someone's interest and create an opportunity to share more details with this person when they ask. I'll share with you how I might "pitch" the value of meeting attendance.

- For nearly 50 years the IL Chapter of the American Fisheries Society has been actively engaged in guiding the protection and management of the state's aquatic resources.
- These resources are an intrinsic part of the state's natural heritage and provide recreational opportunities that contribute an estimated \$0.77 Billion to the state's economy.

- Budget issues are threatening attendance at our annual meeting, which could severely hinder the scientific-based information on which you (the policy person to whom you're talking) base policy decisions.

INSIDE THIS ISSUE:	
President's Message	1, 3
ILAFS Mtg Announcement	4, 6-7
In Memoriam	8
Crayfish Workshop	10
Mississippi River Research	11-12
ILAFS Mtg Awards	13
ILAFS ExComm Bio	17
Forked Creek Passage	18-19

Communication is critical to ensure this scientific information is shared among fisheries professionals and *YOU* (same person) have the capacity to bring together dedicated resource professionals and innovative researchers. I can provide you the costs for such meeting later this afternoon.

It sounds a bit hokey I admit, but the goal of this "elevator speech" is to create an opportunity for more dialog with the person you are targeting. I challenge you to develop your own justification for how you, as a fisheries professional, would initiate such a discussion with folks in your institution.

Another key part of developing resource

"For nearly 50 years the IL Chapter of the American Fisheries Society has been actively engaged in guiding the protection and management of the state's aquatic resources."

professionals is mentoring students. The Chapter has several programs designed to help students including:

(Continued on page 3)

**Illinois Chapter of the American Fisheries Society**

**President:** Ann Marie Holtrop

**President-elect:** Jeremy Tiemann

**Secretary-Treasurer:** Jeremiah Haas

**At large EXCOM:** Laura Sass and Trent Thomas

Archival.....Bob Schanzle

Awards.....Steve Pescitelli

Continuing Education.....Jeremy Tiemann

Environmental Concerns.....Scott Shasteen

IL Environmental Council.....Bruce Lippincott

IL Wildlife Action Team.....Trent Thomas

Membership.....Matt Diana

Raffle.....Jim Lamer

Resolutions.....Rob Hilsabeck

Student Concerns..... Trent Thomas

Student Subunits

Eastern Illinois University.....

Southern IL University.....Quinton Phelps

University of Illinois.....Blake Ruebush

Time and Place.....Jeremiah Haas

Website.....Jim Garvey

**NCD Technical Committee Reps**

Centrarchid.....Dan Stephenson

Esocid.....Steve Pallo

Ictalurid.....Dan Sallee

Rivers and Streams.....Steve Pescitelli

Walleye.....Ken Clodfelter

**Newsletter Co-editors**

Quinton Phelps.....qphelps@siu.edu

Heidi Lewis.....hal7e7@siu.edu

**Corporate Members of the  
Illinois Chapter of the  
American Fisheries Society**



*developing today...for tomorrow*

VILLAGE OF LINDENHURST



***Wetlands Research, Inc.***



Illinois Council  
Trout Unlimited

*(President's Message, Continued from page 1)*

annual financial contributions to sub-units, travel grants to various meetings, research grants, and discounts on registration. Through conversations with subunit officers, I realized that these efforts alone are not enough to fulfill this part of our Chapter mission. We need more direct communication with the students. Our first step was to update the Chapter procedures manual in order to develop clearer expectations for student officers, their advisors, and the Chapter. We also acknowledged the need for small group discussions between Chapter and sub-unit officers. At the next Chapter meeting in Rock Island, Jeremy, Jeremiah, and I will have lunch with the sub-unit presidents and advisors and will discuss what we as a Chapter can do to provide more support to the students. We hope this will start a new tradition, and the improved communication between subunits and the Excom will be valuable for both students and our professional Chapter members.

In closing, we have an exciting opportunity next year to develop students and professionals

throughout the Midwest. On December 6-9, 2009, approximately 800 Midwestern fisheries and wildlife students and professionals will be in Springfield for the 70<sup>th</sup> Midwest Fish and Wildlife Conference. If this past year is any indication, Illinois will face enormous challenges getting professionals to attend. During the recent Midwest meeting in Columbus, approximately two-thirds of the states comprising the North Central Division had travel restrictions for state employees. Likely travel restrictions will not improve significantly in the next year. It is important that we lay the groundwork now within our agencies and institutions to attend the Midwest and other professional training opportunities. In addition to preparing an "elevator speech", I encourage all of you to help us strengthen the content of the upcoming conferences by presenting papers or submitting workshop ideas and symposium topics. We have many challenges ahead of us. But, I believe with creativity and preparation, we will continue to successfully develop the next generation of fisheries leaders.

-Ann



## **Environmental Sampling Theory - Study Design, Data Collection, and the Appropriate Use of Statistics in Data Reporting**

Course I.D. STAT-403  
March 5-6, 2009, 8:30 A.M. to 5:00 P.M. (2 Days)  
Metropolitan State University - St. Paul Campus  
Founders' Hall, room L118  
700 Seventh Street E.  
St. Paul, MN 55106

**Instructor:** Dr. Harold J. Geiger

**[http://nwetc.org/stat-403\\_03-09\\_st-paul.htm](http://nwetc.org/stat-403_03-09_st-paul.htm)**

[www.eastmoline.com](http://www.eastmoline.com)



## **47th Annual Meeting of the Illinois Chapter of the American Fisheries Society**

**February 24-26, 2009**

### **Fifth Season Hotel and Conference Center in Moline, Illinois (formerly *Holiday Inn at the airport*)**

Announcing, the 47<sup>th</sup> annual meeting of the Illinois Chapter of the American Fisheries Society on 24-26 February 2009 at the Fifth Season Hotel and Conference Center in Moline, Illinois (formerly Holiday Inn at the airport). Please consider attending. It will be a great chance to renew with old acquaintances, hear what exciting research fellow Illinoisans are conducting, and win great prizes at the raffle while supporting the Chapter. In this newsletter, you will find a meeting registration form and call for papers. Early registration ends 26 January 2009 and abstracts are due 31 January 2009. If you have any questions regarding the meeting, please feel free to give me a shout. **Happy fishing.**

—Jeremy Tiemann

Illinois Natural History Survey

Mailing address: 1816 South Oak Street -  
Champaign, IL 61820

Physical address: 607 East Peabody Drive,  
Room 96 - Champaign, IL

Office telephone: (217) 244-4594

Email: [jtiemann@illinois.edu](mailto:jtiemann@illinois.edu)



[www.deere.com](http://www.deere.com)

## Student Concerns Committee

**Trent Thomas**

The Student Concerns Committee is proud to announce the recipients of the 2008 IL AFS Student Research Grants: Quinton Phelps (SIUC) for his research project titled, "Determination of *Scaphirhynchus* sturgeon origin in large inter-connected rivers using trace-element analysis"; Dawn Sechler (SIUC) for her research project titled, "Diet composition of young-of-year (YOY) sturgeons (*Scaphirhynchus albus* and *S. Platyrhynchus*) in the Middle Mississippi River"; and Mike Wilson (UIUC) for his project titled, "Distance of dispersal of three species of Asian carps in tributaries along the middle reaches of the Illinois River." These three students will receive up to \$500 towards the expenses of their research projects. IL AFS is excited to be able to provide this new opportunity for Fisheries students of the state, and we look forward to continued student participation in this research grant program.

Congratulations also go out to Mike Wilson, a Master's student at the University of Illinois at Urbana-Champaign. Mike was awarded the Joan Duffy Award, a travel grant from the Illinois Chapter and the North Central Division of the American Fisheries Society to attend the Midwest Fish & Wildlife Conference in Columbus, Ohio. This award is given annually to a deserving Illinois college student to help defray the costs of attending the Midwest meeting.

Now is the time to apply for student travel grants to attend the 2009 Annual Meeting of the Illinois Chapter of the American Fisheries Society, February 24-26. Up to four travel grants (\$100 each) will be awarded to both undergraduate and graduate students to attend the meeting at the Fifth Season Hotel & Convention Center in Moline, Illinois. This is a great opportunity for students to meet with professionals in their field and learn more about current aquatic issues and research in Illinois. To apply, send a brief letter of application explaining why you would like to attend the meeting (e.g., paper presentation, pertinent symposium, business meeting, educational opportunity, etc.). Be sure to mention if you will be presenting a poster or talk at the meeting and also your membership status in the state chapter and national AFS. Please have your advisor or department head write a brief letter of recommendation which also confirms a need for travel funds as well. Submit letters of application by **February 12<sup>th</sup>** to Trent Thomas, Illinois Department of Natural Resources, 301 South Date Street, Gibson City, IL 60936.

The Chapter will once again be presenting the Lewis L. Osborne Award for the best paper presented by a student at the Annual Meeting. The award winner will be eligible for up to \$500 in reimbursement to present their research at a future national AFS meeting. Judges are once again needed to score student paper presentations at this year's chapter meeting. **Volunteers** for this rewarding experience are greatly appreciated. If you are interested, please contact Trent Thomas as soon as possible at (217)784-4730 or [Trent.Thomas@illinois.gov](mailto:Trent.Thomas@illinois.gov) or at the address above.

The 47<sup>th</sup> meeting of the  
**The Illinois Chapter  
of the  
American Fisheries Society**



**Registration Form**

- Conference begins at 1:00 on Tuesday, February 24<sup>th</sup> and concludes at 12:00 pm on Thursday, February 26<sup>th</sup>.
- Registration fee includes refreshments during breaks, mixer on Tuesday night and dinner buffet on Wednesday evening. Breakfast will be available at the hotel. Lunch is on your own.
- A block of rooms is reserved until January 24<sup>th</sup> under "American Fisheries Society"; room rate is \$75.00/night plus tax double or single. This is fantastic room rate for the Quad Cities area, so we encourage you to reserve your room early. Reservations can be made by calling the Convention Center at: (309) 762-8811.

*Fifth Season Hotel & Convention Center  
6902 27th Street, Moline, IL  
(Former Holiday Inn Convention Center)*

**Tuesday, February 24, 2009 through  
Thursday, February 26, 2009**

**Registration:**

Name: \_\_\_\_\_

Affiliation: \_\_\_\_\_

Street Address: \_\_\_\_\_

City: \_\_\_\_\_ State: \_\_\_\_\_ Zip: \_\_\_\_\_

Phone: ( ) \_\_\_\_\_ Email: \_\_\_\_\_

**Payment:** Please send payment by check (made out to IL AFS) to Mr. Jeremiah Haas, Quad Cities Nuclear Station, 22710-206<sup>th</sup> Ave. N, Cordova, IL 61242 phone: (309) 227-2867, fax: (309) 227-2887 (call first); Email: [jeremiah.haas@exeloncorp.com](mailto:jeremiah.haas@exeloncorp.com) Payment can be made online with a credit card at: <http://fisheries.siu.edu/ilafs/dues.htm> If paying online, please complete registration form and return to Jeremiah.

IL Chapter dues are paid each calendar year (January 1 through December 31) and can be renewed when

<b>By January 26, 2009</b>		<b>January 27, 2009 – February 24, 2009</b>	
	\$75.00 IL AFS Member - Standard		\$90.00 IL AFS Member - Standard
	\$95.00 Non-member - Standard		\$110.00 Non-member - Standard
	\$50.00 IL AFS Chapter Student, Student Sub-Unit Member, or Retired		\$70.00 IL AFS Chapter Student, Student Sub-Unit Member, or Retired
	\$40.00 Spouse (includes buffets and refreshments) Name: _____		\$60.00 Spouse (includes buffets and refreshments) Name: _____
	\$70.00 Non-member- Student or Retired		\$90.00 Non-member - Student or Retired
	\$15.00 IL Chapter dues - Standard		\$15.00 IL Chapter dues - Standard
	\$10.00 IL Chapter dues - Student or Retired		\$10.00 IL Chapter dues - Student or Retired
<i>Total Included:</i>		<i>Total Included:</i>	

46th Meeting of  
**The Illinois Chapter of the  
 American Fisheries Society**

*Founded 1963*  
**First and Last  
 Call for Papers**



**24-26 February 2009**

**Fifth Season Hotel and Conference Center, Moline, Illinois (formerly Holiday Inn at the airport)**

Abstracts on topics of interest including rivers and streams, urban fishing, watersheds, lake and reservoir management, hatcheries, introduced species, and water quality are encouraged.

***Deadline for abstract submission is January 31<sup>st</sup>***

Oral presentations should be 15 minutes in length with 5 minutes for discussion. Maximum size for poster presentations is 40" x 60". Abstracts for both oral and poster presentations should be no more than 250 words. Please submit them electronically in either Microsoft Word or Word Perfect format to Jeremy Tiemann (jtiemann@illinois.edu), or they can be sent via US mail on a floppy disk or CD ROM (arriving by the deadline date) to:

Jeremy Tiemann  
 Illinois Natural History Survey  
 1816 South Oak Street  
 Champaign, IL 61820

***Presenter Contact Information:***

First Author Name: \_\_\_\_\_

Presenter is a: \_\_\_\_\_ Student \_\_\_\_\_ Professional

Affiliation: \_\_\_\_\_

Street Address: \_\_\_\_\_

City: \_\_\_\_\_ State: \_\_\_\_\_ Zip: \_\_\_\_\_

Phone: \_\_\_\_\_ Email: \_\_\_\_\_

Oral Presentation or Poster? \_\_\_\_\_

***Desired Format for Abstract Submission:***

Mussel Species Richness Expectations According to Drainage and Stream Size in Illinois

Bol, Leslie. Illinois Natural History Survey, One Natural Resources Way, Springfield, Illinois, 62702; 217-785-4325; leslie.bol@illinois.gov.

Co-Authors and Affiliations:

Ann Holtrop, Illinois Department of Natural Resources, IL

Leon Hinz, Illinois Natural History Survey, IL

Kevin Cummings, Illinois Natural History Survey, IL

John Epifanio, Illinois Natural History Survey, IL

This form is available electronically at <http://fisheries.siu.edu/ilafs/> and should be included with the submission.

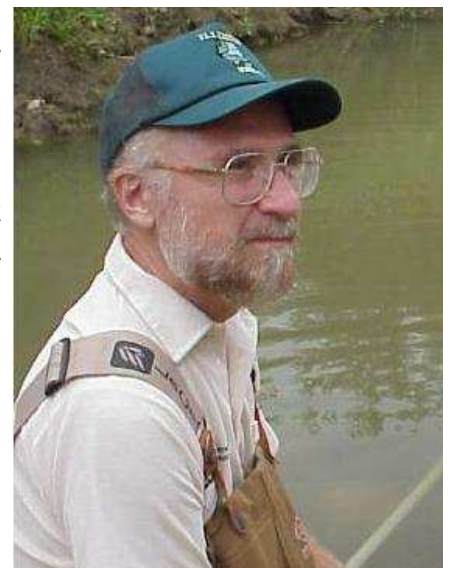
## In Memoriam...Richard "Dick" J. Baur

On December 17, 2008, Illinois' natural resources lost a good friend. Richard "Dick" J. Baur, 62, died at his home in rural Petersburg, having lost his battle with brain cancer.

Dick was born January 29, 1946, in Chicago, the son of the late James and Anna Havlatko Baur. On July 15, 1989, Dick married Sharon Baucom.

In 1967 Dick received his B.A. degree in biology from St. Mary's College in Winona, Minnesota, and in 1969 a M.S. degree in fisheries biology from Iowa State University in Ames, Iowa. He conducted fisheries research for the Illinois Natural History Survey at the Sam A. Parr Fisheries Research Center in Marion County, and was the statewide fisheries resource analyst/planner for the Illinois Department of Natural Resources in Springfield. Within the Office of Resource Conservation, Dick served a vital role by helping to develop an understanding of human dimensions and its role in fisheries management. Dick energetically shared his knowledge about fisheries and nature with all whom were interested. This was readily apparent by his work in 2002, when Dick helped the Illinois Chapter host a Continuing Education workshop entitled, "Linking Aquatic Sciences with Human Dimensions". He introduced attendees to social issues in resource management and discussed how surveying angler attitudes can help managers understand user's needed. He was a dedicated scientist and perhaps more importantly, a true "people person". Dick was always ready to lend a helping hand, and eagerly accompanied me on several stream sampling outings. Dick retired from the Department in December, 2002.

After retirement, Dick continued his love of nature, spending many hours outdoors, creating art with natural materials and wood carving. He whole-heartedly shared his love of native prairie plants, water gardens, and nature in general with all who were interested. During this past holiday season, I thought about Dick and all of his family and friends that will miss him tremendously. A smile came to my face when I saw the handmade ornaments the Baur's made prominently displayed on my Christmas tree. As I strolled through the kitchen and looked into my backyard, I saw a group of birds congregated on some coneflower seed heads, which reside around a small water garden. Another smile came to my face because all of the native prairie plants in my yard originated from the Baur Patch. Dick's legacy remains in the resources he protected, the anglers he helped satisfy, and the parts of himself that he left with those of us fortunate to call him a friend.





## Fishbowl Forum

This happy group of IL AFS members, including three founding Chapter members, was spotted at the Illinois Natural History Survey's 150<sup>th</sup> celebration in September.



Pictured left to right; front row: Weldon Larimore, Homer Buck; Middle: Leonard "Bull" Durham, Steve Pescitelli, Ann Marie Holtrop, Dave Day, Kevin Irons; Back row: Bob Illyes, David Thomas, Matt O'Hara





# NCER

3rd National Conference on Ecosystem Restoration

The Spirit of Cooperation











July 20-24, 2009 | Los Angeles, CA | Westin Bonaventure Hotel

## Abstract Submission Deadline Extended to January 16, 2009

Visit our website at:

[www.conference.ifas.ufl.edu/NCER2009](http://www.conference.ifas.ufl.edu/NCER2009)

**The Continuing Education Committee of the Illinois American Fisheries Society  
Announces Their Next Workshop:**

*The Crayfishes of Illinois*

The Continuing Education Committee of the IL/AFS invites you to participate in their next workshop on Wednesday-Thursday, 29-30 April 2009 at the Kibbe Field Station near Warsaw, Illinois. Course content includes a classroom element on ecology and identification and a fieldtrip component on collection. Participants will gain a basic understanding of life history, habitat requirements, and conservation of crayfishes. INHS staff will lead instruction.



**When:** Workshop begins at 1:00 p.m. on Wednesday, 29 April 2009 (classroom) and concludes at 3:00 p.m. on Thursday 30 April 2009 (fieldtrip)

**Where:** Kibbe Field Station, Warsaw, Illinois

**Cost:** \$75 per person

*\*Cost includes lodging, meals, workshop materials, and refreshments during*

If you are interested in attending or have questions about the workshop, contact Jeremy Tiemann (217-244-4594 or [jtiemann@inhs.uiuc.edu](mailto:jtiemann@inhs.uiuc.edu)). Complete this form and return to the address listed below. A confirmation email with an agenda will be sent when registration packet is received.

Name: \_\_\_\_\_  
 Affiliation: \_\_\_\_\_  
 Address: \_\_\_\_\_  
 City: \_\_\_\_\_ State: \_\_\_\_\_ Zip: \_\_\_\_\_  
 Daytime Phone: \_\_\_\_\_  
 E-mail address: \_\_\_\_\_

- I will be paying by personal check (Please make checks payable to IL/AFS)
- will be paying by state voucher (Mail a photocopy of the state voucher form to Jeremy Tiemann at the address below)

**Return completed form and check (photocopy of state voucher form) to:**

IL/AFS Continuing Education  
 Attn: Jeremy Tiemann  
 1816 S. Oak St.  
 Champaign, IL 61820

# INSTRUCTIONS FOR ABSTRACT PREPARATION AND SUBMITTAL

**Submittal Form:** Abstracts for platform and poster presentations should be submitted by e-mail (Microsoft Word attachment). Font (print) size/type: 12 point/Times Roman (preferred) or Universal Scalable. If you cannot e-mail the abstract, send it as a MS Word file on a 3 ½" disk.

**Submittal Format:** The first line of the abstract should contain the title in CAPITAL letters. Skip 1 line and type the author(s) names, and address(es). **Bold face** the presenter's name. Skip 1 line and begin the text. Text can be a maximum of 45 single-spaced lines. The abstract must fit within 1-inch margins at the top, bottom, and sides (see example below). No figures are allowed.

**Keywords:** Please include a list of 5 key words in a line below the abstract (for use on MRRC website).

**Example Abstract:**

**TEMPORAL AND VERTICAL DISTRIBUTION OF UN-IONIZED AMMONIA IN SEDIMENT PORE WATER IN POOL 8, UPPER MISSISSIPPI RIVER.**

**Bradley E. Frazier**<sup>1,2</sup>, Teresa J. Naimo<sup>1</sup>, and Mark B. Sandheinrich<sup>2</sup>

<sup>1</sup>U.S. Geological Survey, Upper Midwest Environmental Sciences Center, La Crosse, WI 54602. <sup>2</sup>River Studies Center, University of Wisconsin-La Crosse, La Crosse, WI 54601.

Recently, populations of the fingernail clam *Musculium transversum* have significantly decreased in the upper Mississippi River. Although the causal factors contributing to this decline are unknown, high concentrations of un-ionized ammonia (NH<sub>3</sub>) in pore water...

Keywords: fingernail clam, Mississippi River, *Musculium transversum*, ammonia, macroinvertebrate

**At the bottom of the page, type/indicate:**

1. The name, address, telephone and FAX numbers, and e-mail address of the presenting author. Please indicate if any of the above information should NOT be included on the website.
2. Denote your preference for Platform or Poster presentation formats and willingness (yes/no) to convert from one format to another. If a platform presentation is requested, indicate the media to be used (slides or PowerPoint).
3. Denote if the paper is authored by a student (**Students, please note 3 travel scholarships are available, see above**).
4. Indicate if you need a larger space (5 x 8 ft instead of the new standard 5 x 4 ft) for your poster. Approval is dependent on available space.

E-mail or mail the abstract (Microsoft Word file) to the address listed above.

**SUBMISSIONS MUST BE POSTMARKED BY JANUARY 16, 2009.**

Confirmation of receipt will be returned via e-mail.

Due to the large number of abstracts received for recent meetings, we can accept only one submission (platform or poster) by the same first author.

*All participants in the conference must register and pay appropriate fee*





## MEETING ANNOUNCEMENT AND CALL FOR PAPERS

Mississippi River Research Consortium  
41<sup>st</sup> Annual Meeting  
April 30-May 1, 2009  
LaCrosse, Wisconsin

The Mississippi River Research Consortium is soliciting platform and poster papers for presentation at the 41<sup>st</sup> Annual Meeting (April 30-May 1, 2009). Papers are invited on any subject dealing with the biota and environment, both terrestrial and aquatic, in and along the Mississippi River and its major tributaries.

**Platform presentations:** Speakers will be allotted 20 minutes for each presentation including 5 minutes for questions and discussion. Use of Microsoft PowerPoint (2003 preferred) is strongly encouraged for platform presentations; however a 35 mm (2" x 2") slide projector will be available.

**Poster presentations:** Standard posters should be no larger than 5 x 4 ft (H x W). A larger space (5 x 8 ft) can be requested and will be approved if space is available. Text, tables, and figures should be readable from a distance of 4 ft. Velcro (not provided) will be used to attach posters to the presentation boards.

Instructions for abstract preparation and submittal appear below. Submit all abstracts and program inquiries to:

**Dr. Greg G. Sass**

Illinois River Biological Station

Illinois Natural History Survey

Institute of Natural Resource Sustainability

University of Illinois at Urbana-Champaign

704 North Schrader Avenue

Havana, Illinois 62644

Telephone: (309) 543-6000

[ggsass@illinois.edu](mailto:ggsass@illinois.edu)

**ABSTRACTS MUST BE POSTMARKED BY JANUARY 16, 2009**

A preliminary program with registration materials and information on hotel accommodations will be mailed during February 2009. This information will also be available on the MRRC webpage at <http://www.umesc.usgs.gov/mrrc.html>.

# AWARDS FOR THE 2009 ANNUAL MEETING

## PROFESSIONAL TRAVEL AWARD

Travel dollars are hard to come by these days, so if you find yourself in a tight spot and need to get to the meeting – don't forget your Chapter offers a Professional Travel Awards twice annually. Obviously, we also have a limited budget so get your application in early and, of course it always helps if you are involved in AFS activities at the meeting, and/or you are giving a paper or a poster, not to mention a paying Chapter member (another good reason to get your dues updated). The application form can be found on the Chapter website: <http://fisheries.siu.edu/ilafs/index.htm>. Please fill out the form and email to Steve [Steve.pescitelli@illinois.gov](mailto:Steve.pescitelli@illinois.gov) by February 9, 2008. Awards will be decided by the ExCom before February 13. Contact Steve for more information.

## POSTER AWARD PROGRAM

Don't forget, last year we started a new BEST POSTER AWARD so if you are thinking about putting in a poster for the meeting here is some extra incentive. As you recall, this is very similar to the Best Paper Award, with official scoring by your peers - unbiased, professional judges, using established criteria. Another great opportunity from your Chapter!

## JUDGES NEEDED FOR BOTH PAPER AND POSTER PRESENTATIONS

That's right, now we need you even more than ever. Judging papers is a very good way to really dig into a session and get the most out of the work of your colleagues. First of all, you have to be present at the paper (that is a good first step), then you have to pay attention (no napping please). Then you will be armed to have intelligent, informed discussions with peers about all the good science going on in Illinois. And...just like last year, as those dedicated members who agreed to judge last year, each judge will be judging both professional and student papers within a session. So, please sign up to judge either papers, posters, or both – your choice. Contact Steve Pescitelli or Trent Thomas to join the fun and as always gain the prestige and admiration as an Illinois AFS judge. [Steve.pescitelli@illinois.gov](mailto:Steve.pescitelli@illinois.gov) [trent.thomas@illinois.gov](mailto:trent.thomas@illinois.gov)

## MERITORIOUS SERVICE AND STEPHEN A. FORBES EXCELLENCE IN FISHERIES AWARDS

ExCom is now accepting nominations for both of these prestigious awards, to be presented at 2009 annual meeting. The Meritorious Service award is intended for individuals who have made significant contributions to the Illinois AFS Chapter through long-standing service on committees, serving on the ExCom, organizing meetings, raffles, fund raisers, etc. As the name implies, the Stephen A. Forbes Award is for professionals who have demonstrated excellence in fisheries science by way of publishing papers, consistent contribution of oral presentations and/or posters, mentoring students, promoting fisheries science through popular publications and presentations to non-scientific groups, long term contributions to fisheries management through project management above and beyond normal work duties, long-term excellence in management performance, organizing symposia and workshops, displaying leadership in professional organizations (beyond IL AFS), etc. All nominations are reviewed by the ExCom. Please send your nomination letters to [steve.pescitelli@illinois.gov](mailto:steve.pescitelli@illinois.gov) by February 10<sup>th</sup>.





## Millennium Conference 2009:

### Water-Ecosystem Services, Drought, and Environmental Justice

The ESA Governing Board is pleased to announce that the first Millennium Conference, ***Water-Ecosystem Services, Drought, and Environmental Justice***, will be held in the fall of 2009. The conference is being co-chaired by Ted Gragson of the University of Georgia and Steward Pickett of the Cary Institute of Ecosystem Studies.

The objective of this conference is to create a forum for participatory discussion of the socio-ecological processes of the local-to-regional provision of water-ecosystem services. The goal is to initiate a fundamental shift in approach to managing and allocating ecosystem services. This approach will draw on the strengths of physical, biological and social science disciplines to reach an understanding of patterns, mechanisms and processes that anticipate plausible change. The significance of this shift is that it lays the foundation for addressing ecosystem and social vulnerability to drought while minimizing environmental justice consequences.

Participation will be primarily by invitation. Limited opportunities to apply to attend, along with other details, will be announced at a later date.

**For further information, contact Aleta Wiley, Science Program Assistant at ESA Headquarters, 202-833-8773 ext. 218; [aleta@esa.org](mailto:aleta@esa.org).**



### MIDWEST AQUATIC PLANT MANAGEMENT SOCIETY 2009 ANNUAL CONFERENCE

MARCH 1-3, 2009

WYNDHAM LISLE-CHICAGO HOTEL &  
EXECUTIVE MEETING CENTER

[WWW.MAPMS.ORG](http://WWW.MAPMS.ORG) FOR MORE INFORMATION



August 10-13, 2009  
 Collinsville, Illinois

**Conference Topics:**

- Ecosystem services/economic value of Mississippi River
- Floodplain connectivity, flood control, and hydrologic regime
- Ethanol production and the Mississippi River
- Clean water and the Mississippi River—uses and threats

For more information, visit the Conference Web site at:  
[www.conferences.uiuc.edu/mississippiriver](http://www.conferences.uiuc.edu/mississippiriver)

Or contact:  
 Vera Bojic: [vbojic@lc.edu](mailto:vbojic@lc.edu)  
 John Chick: [chick@inhs.uiuc.edu](mailto:chick@inhs.uiuc.edu)

Hosted by



The National Great Rivers Research and Education Center  
[www.ngrrec.org](http://www.ngrrec.org)



## ***State in danger of losing millions in conservation funds***

### **Legislature must restore funds 'swept' to pay bills or risk losing federal money**

By Chris Young- **GateHouse News Service**

The Illinois General Assembly must act quickly this month to restore \$9.25 million in restricted funds "swept" to pay state bills or risk losing millions in federal dollars for fish and wildlife management. The U.S. Fish and Wildlife Service sent Gov. Rod Blagojevich's office a letter dated Dec. 19, stating that any transfer of hunting and fishing license fee revenues to pay other state expenses would be an illegal diversion in violation of federal law. The Fish and Wildlife Service had warned the state against making the transfers in an Oct. 6 letter. The money is part of \$221 million swept last fall from a long list of special state funds to help close Illinois' budget gap. Included were six funds that are repositories for hunting and fishing license, stamp and other fees. States receive a share of excise taxes collected on the purchase of sporting goods, such as fishing rods and reels and shotgun shells, if they agree not to spend money generated by the sale of hunting and fishing licenses, stamps and related fees on things other than managing wildlife and fish restoration projects. Illinois' estimated share of federal funds for fiscal 2009 is about \$16 million. The letter from Thomas Melius, a regional director of the U.S. Fish and Wildlife Service based in Fort Snelling, Minn., noted that Blagojevich was advised of the illegal fund transfers, but signed the bill into law the next day. The "swept" money is being used to keep open some state parks targeted for closure and to restore other cuts, including for substance abuse treatment centers throughout Illinois. Blagojevich vetoed \$55 million of the \$221 million authorized by the legislation to be swept from the funds, much more than the \$9.25 million questioned by the

Fish and Wildlife Service, according to a letter sent Dec. 16 by Kevin Hovis, general counsel in the Governor's Office of Management and Budget. Half of the \$9.25 million already has been transferred from the dedicated funds. "...None of the money transferred from the Funds in accordance with the Act has been spent by the state," Hovis wrote. "The transferred money remains untouched in a separate and distinct State fund." Legislative action is needed to return DNR funds "from which they originated," Hovis added. Aaron Kuehl, conservation director for Illinois Pheasants Forever, said he is concerned that distractions over the possible impeachment of Blagojevich may bring other work to a halt at the Capitol, causing Illinois to miss the Fish and Wildlife Service's deadline. Feb. 2 is 45 days from the Dec. 19 date stamped on the letter. State Rep. Dan Reitz, D-Sparta, said concerns about inaction are legitimate. "We're really not functioning on any level," Reitz said. "A lot of problems and concerns are not going to be a dressed until we finish the impeachment process and move on. Still, Reitz said he remains hopeful the legislature can restore the transfers in the first week of the new session that starts Jan. 14. While the rules have always stated a loss of federal funds was possible, Kuehl said it could be good for everyone to see that the rules have teeth. "Long term, this could be a good thing for these funds," he said. "Now, the (Fish and Wildlife Service) has taken it a step farther, and we have a letter saying this is wrong. "Hopefully, we won't be revisiting this in the future."

<http://www.ens-newswire.com/ens/jan2009/2009-01-07-093.asp>




# The next individual to be nominated for the Executive Committee of the IL AFS

Trent Thomas

## **Bio for IL AFS EXCOM Nomination**

Trent is a Streams Biologist for the Illinois Department of Natural Resources (IDNR) Division of Fisheries, serving in that position for the past nine years. Trent's jurisdiction covers the basins of the Wabash River Tributaries, the Embarras River, the Upper Kaskaskia River, and the Upper Sangamon River in East-Central Illinois. Prior to his current position and attending graduate school, he also worked a two-year stint with the IDNR in the Fisheries Analysis Section in Springfield in the mid-1990's. He has served the Illinois Chapter of the American Fisheries Society as chairman of the Student Concerns Committee since 2000, IL AFS representative to the Illinois Fish & Wildlife Action Team since its inception in 2006, and Member-At-Large on the Executive Committee for the past year.

Trent received his Bachelor's degree as a double-major in Biology and Environmental Studies in 1992 from Monmouth College and his Master's degree in 2000 from the University of Illinois at Urbana-Champaign as a Natural Resources and Environmental Sciences major. Trent grew up in Chenoa and now lives in Bloomington, Illinois with his wife, Jill and six-year-old son, Zachary.



## The Service and its partners restore fish passage on Forked Creek in northeastern Illinois

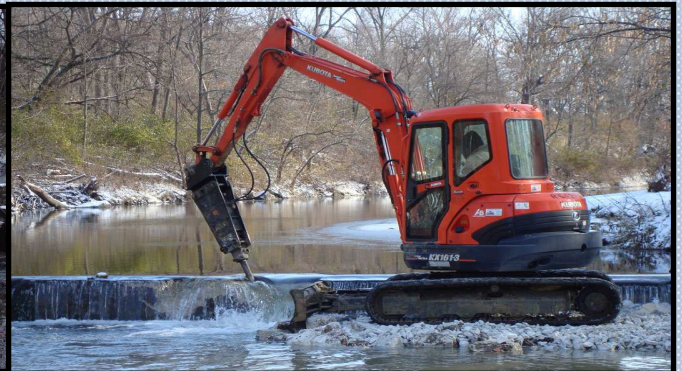
By Nate Caswell USFWS

Leonard's Dam is located in Wilmington, Illinois on Forked Creek less than a half mile above its confluence with the Kankakee River. Built in the early half of the 20<sup>th</sup> century, in a time when our collective consciousness was just beginning to turn toward thoughts of conservation, the dam isolated the entire Forked Creek watershed. Nearly 100 miles of stream habitat was disconnected from the Kankakee River, a vital source of mussel and fish recruitment. Unlike many old dams, such as mill dams, that once served vital roles, Leonard's Dam was built strictly for private recreational purposes. The dam was built by Art Leonard, a wealthy resident of Wilmington. According to Bud Lombardi, one of the landowners involved in this project, Mr. Leonard wanted his daughter to have a place to paddle her canoe, so he built the dam to create a small impoundment. Another version of the story is that he built the dam to enhance the beauty of Mrs. Leonard's gardens. Whatever the reason for building the dam, the end result was decades of habitat fragmentation for Forked Creek.

Like many areas surrounding urban centers, the human population in once-rural portions of Will County in northeastern Illinois is rapidly expanding. As development accelerates, local watersheds are subjected to ever-increasing pressures that lead to water quality and habitat degradation. Prairie Streams, a community based watershed initiative, was formed in 2002 to work on behalf of Forked Creek and other watersheds in this area. Working closely with Openlands, a non-profit organization seeking to preserve open spaces in northeastern Illinois, and the Illinois Department of Natural Resources (IDNR), Prairie Streams developed a Watershed Plan that identified fish passage as a top priority. The group assessed restoration opportunities in the four watersheds and identified removal of Leonard's Dam as one of the projects that would have the greatest benefit to



Leonard's Dam on Forked Creek in Wilmington, Illinois.



Randy Stowe with BioTechnical Erosion control breaches Leonard's Dam on Forked Creek in Wilmington, Illinois.

In 2005, Prairie Streams, IDNR, and Openlands approached the Village of Wilmington about removing the dam, and the Village supported the project. An evaluation of the possible alternatives resulted in partial removal of the dam being the preferred option. In 2006, Steve Pescitelli with IDNR contacted Carterville NFWCO to discuss removal of Leonard's Dam, and we submitted a proposal to the Service's National Fish Passage Program (NFPP). The Service was able to contribute more than \$55,000 to the project, while cash and in-kind contributions from Openlands, IDNR, and the Village of Wilmington totaled more than \$33,000. Of course, no project would be complete without a few speed bumps along the way. After a bit of wrangling with land ownership, historic preservation, and permitting issues, the project was finally ready to get underway in December 2008.

The contractor prepared the site on 1 December, and began breaking up the dam the following day. Once the dam was breached, it took only a few hours for the impoundment to drain completely. Even before the project was complete, two riffles above the dam were exposed, giving the stream a more natural appearance. The dam was lowered 2-3 feet, and the concrete rubble was used to partially fill the scour hole that was present at the base of the dam. Additional rock was then added to finish filling the hole and reinforce the dam abutments which had been left in place. As the new stones accumulate biological material in the coming years, we anticipate that the site will take on the appearance of a more natural rock riffle. The project was completed on 3 December, and additional adjustments and access site reseeded will take place in spring 2009.

Based on a 2004 IDNR fishery survey of Forked Creek, at least eight native fishes occurred only downstream of Leonard's Dam. These included species such as channel catfish and shorthead redhorse, which are good indicators of the presence of barriers in the streams of northeastern Illinois. In an open stream system, we would expect to find these species throughout the watershed, at least during certain times of the year. However, they are typically not found above the first barrier in streams that are blocked by dams. This project restored a permanent connection between the Kankakee River and 93 stream miles of the Forked Creek watershed for the first time in more than half a century. We anticipate that this project will help restore the original distribution of previously excluded fish species. In addition, Forked Creek is home to 13 mussels that may benefit from restored stream access for host species. Our hope is that this project will help to insure the long-term viability of the biological communities in the Forked Creek watershed.



The completed project on the former site of Leonard's Dam in Wilmington, Illinois. As the new stone accumulates biological material, it will begin to look more like a natural riffle.

Illinois Chapter of the  
c/o Quinton Phelps  
Fisheries and Illinois Aquaculture Center  
Southern Illinois University  
Mail code 6511  
Carbondale, IL 62901-6511

NONPROFIT ORG.  
U.S. POSTAGE  
PAID  
CARBONDALE, IL

